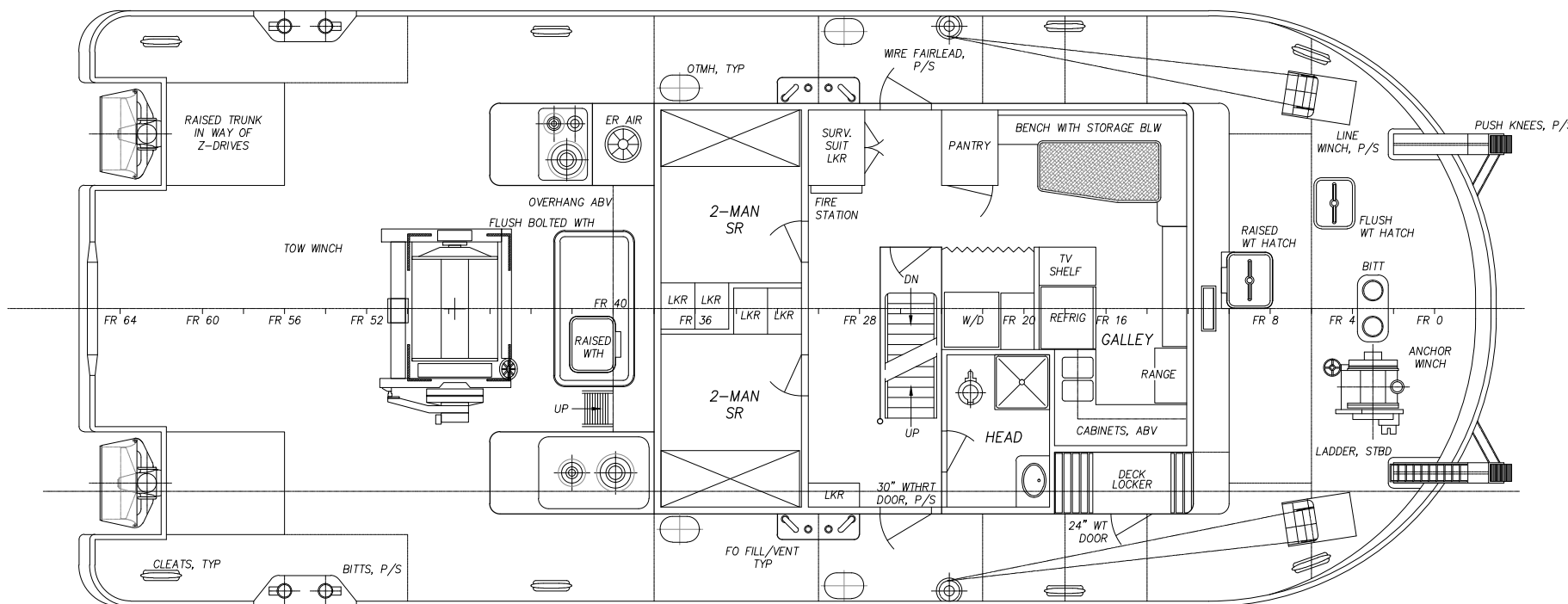


REVISIONS

SYM	ZONE	DESCRIPTION	BY	DATE
-		1. ISSUED FOR PLANNING AND ESTIMATING	JL	8-23-12

GENERAL NOTES

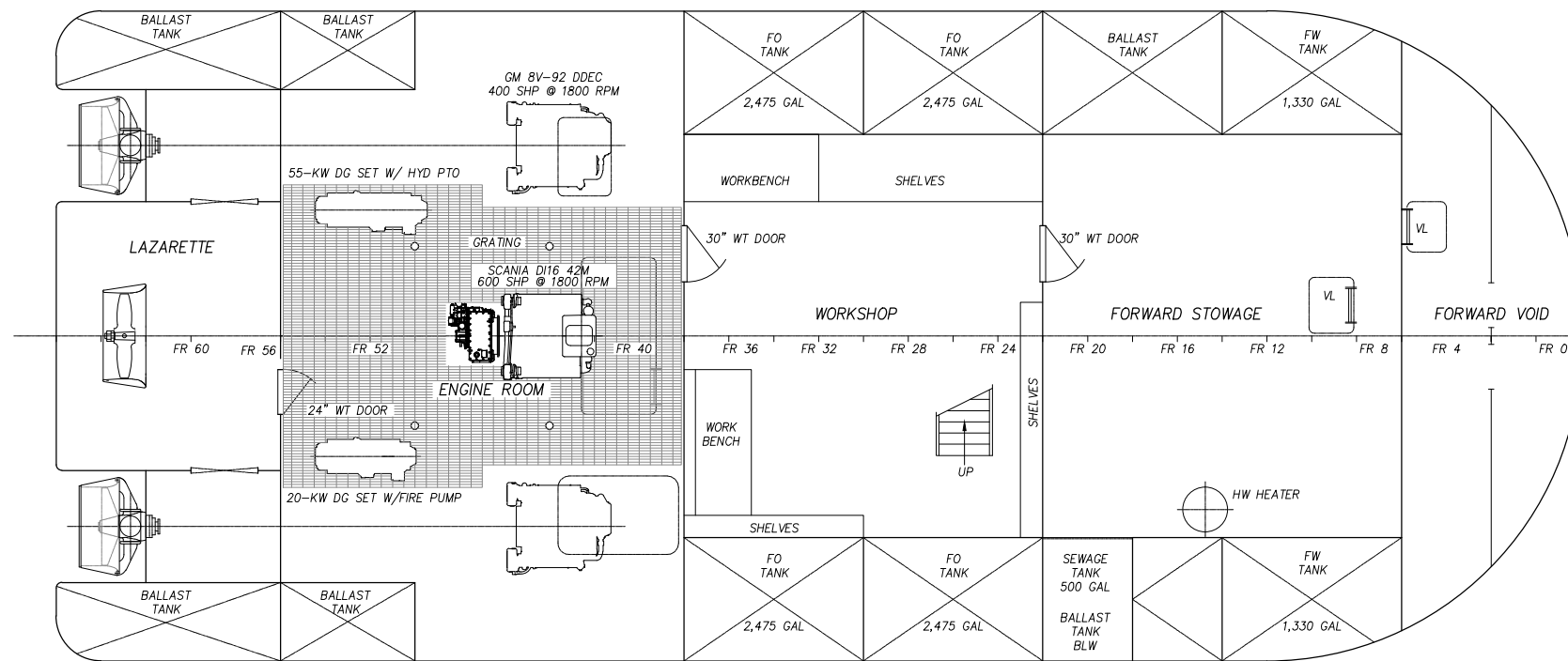
- DEVELOPED FROM THE GENERAL ARRANGEMENT REFERENCE 1, REVISION B. ADDITIONS INCLUDE CENTER PROPULSION ENGINE AND NEW TOW WINCH AS PART OF THE REPOWERING PROJECT.



MAIN DECK

VESSEL PARTICULARS

- LENGTH, OVERALL - 70' -9" (OVER FENDERS)
- LENGTH, MOLDED - 68' - 0"
- LENGTH, WATERLINE - 66' - 6"
- BEAM, OVERALL - 31' - 0" (OVER FENDERS)
- BEAM, MOLDED - 29' - 0"
- DEPTH, MOLDED - 8' - 0"
- DESIGN DRAFT - 4' - 0"
- HORSEPOWER - 2 X 400 SHP
1 X 600 SHP
- PROPULSION UNITS - 2 X SCHOTTEL 170
1 X KORT NOZZEL
W/CONVENTIONAL PROPELLER



HOLD PLAN

2		
1	GENERAL ARRANGEMENT AND OUTBOARD PROFILE (ORIGINAL)	95172-101-1
NO	TITLE	DRAWING NO

REFERENCES

PROJECT	REPOWER OF 68 FT PUSH TUG "CROSS POINT"
CLIENT	NORTHLAND SERVICES MARINE TRANSPORT

TITLE	GENERAL ARRANGEMENT AND OUTBOARD PROFILE
-------	--

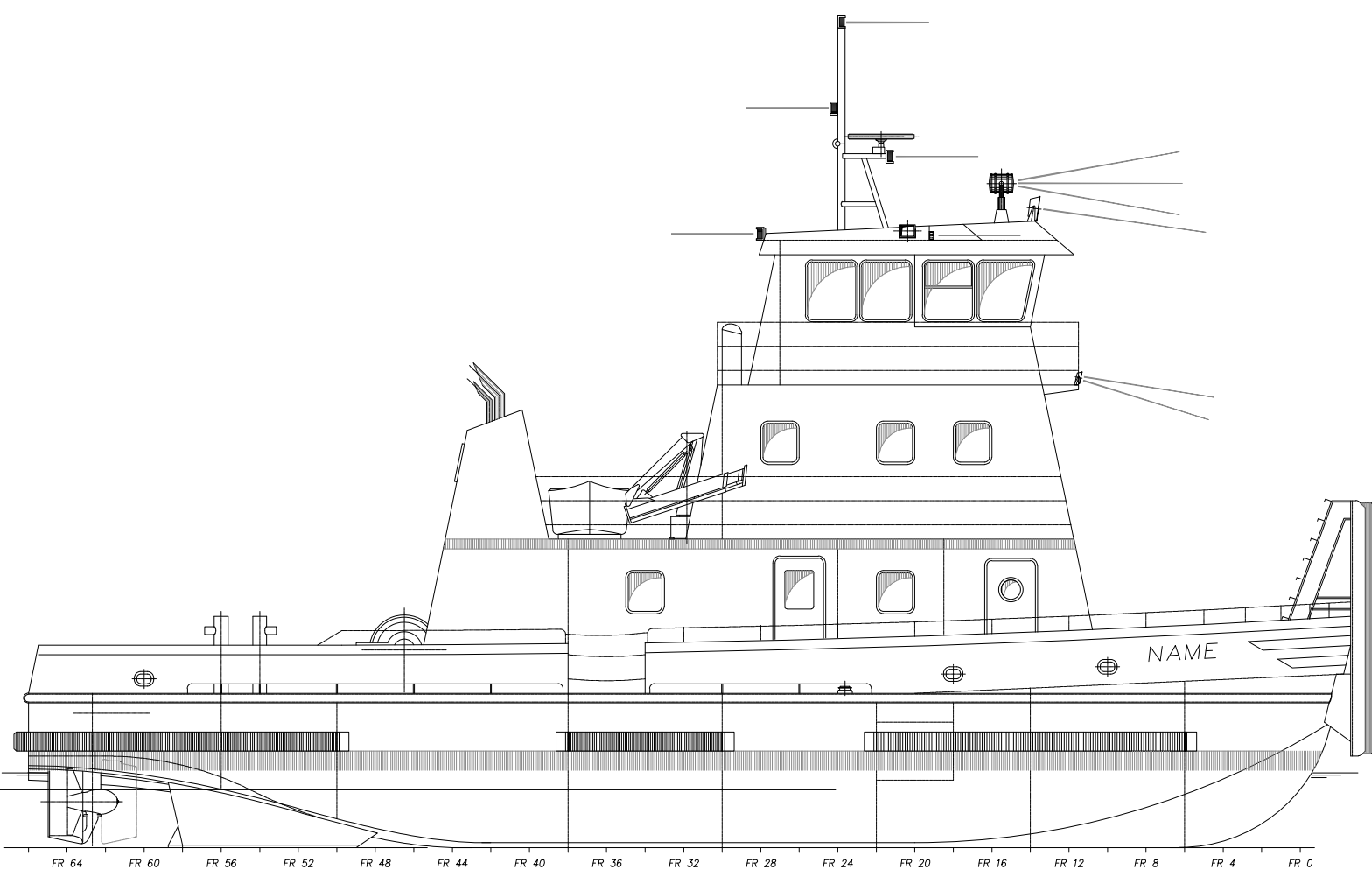
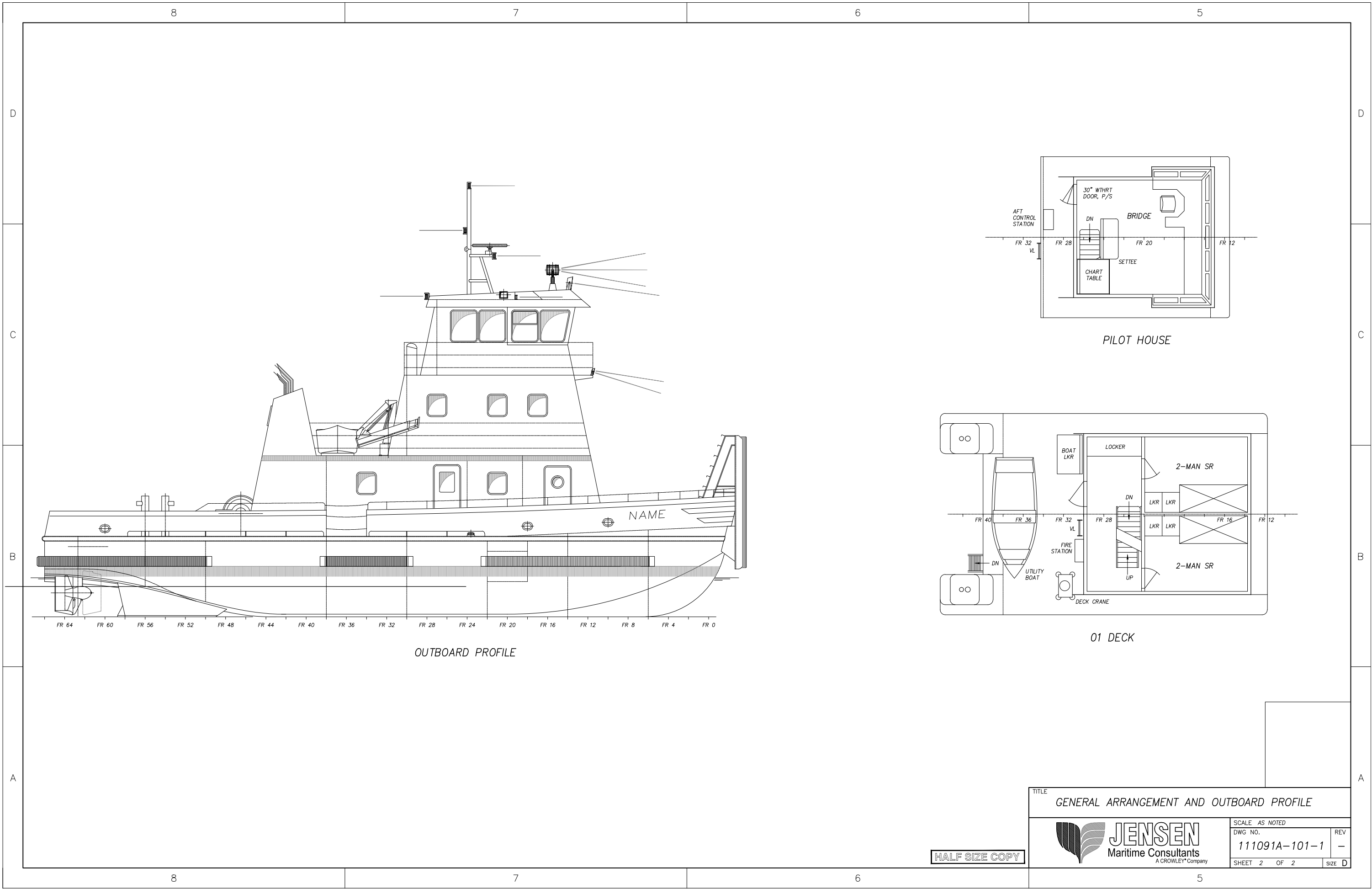
This drawing/specification remains the property of Jensen Maritime Consultants, Inc. and should neither be copied nor used in manufacturing, nor shown or handed over to a third party or to competing firms without our written consent.



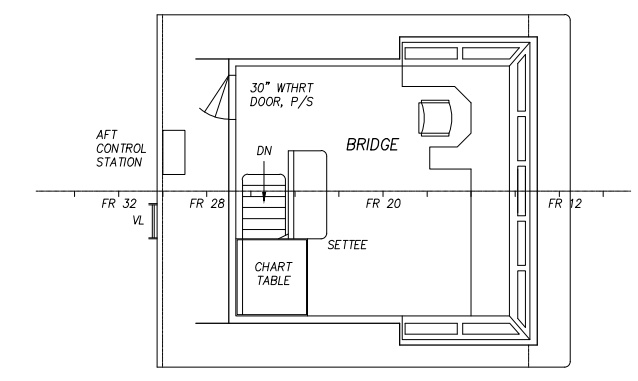
1102 SW Massachusetts Street
Seattle, Washington 98134
www.jensenmaritime.com
Ph 206 284 1274
Fax 206 284 2556

DWN	SFH	DATE	02/22/12
CKD	SM	DATE	02/22/12
APP	CAP	DATE	02/22/12
SCALE 1/4" = 1'-0"			
DWG NO.	111091A-101-1		REV
SHEET 1 OF 2			SIZE D

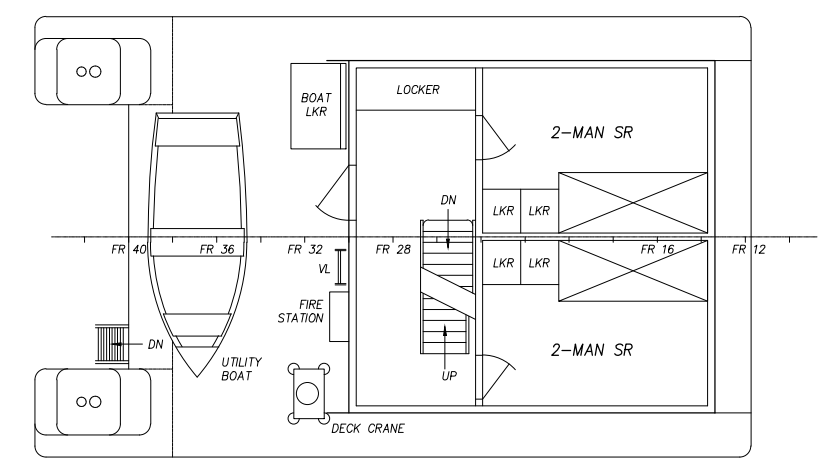
HALF SIZE COPY



OUTBOARD PROFILE




PILOT HOUSE



01 DECK

HALF SIZE COPY

TITLE GENERAL ARRANGEMENT AND OUTBOARD PROFILE		
 JENSEN Maritime Consultants <small>A CROWLEY* Company</small>	SCALE AS NOTED	REV
	DWG NO. 111091A-101-1	-
SHEET 2 OF 2	SIZE D	