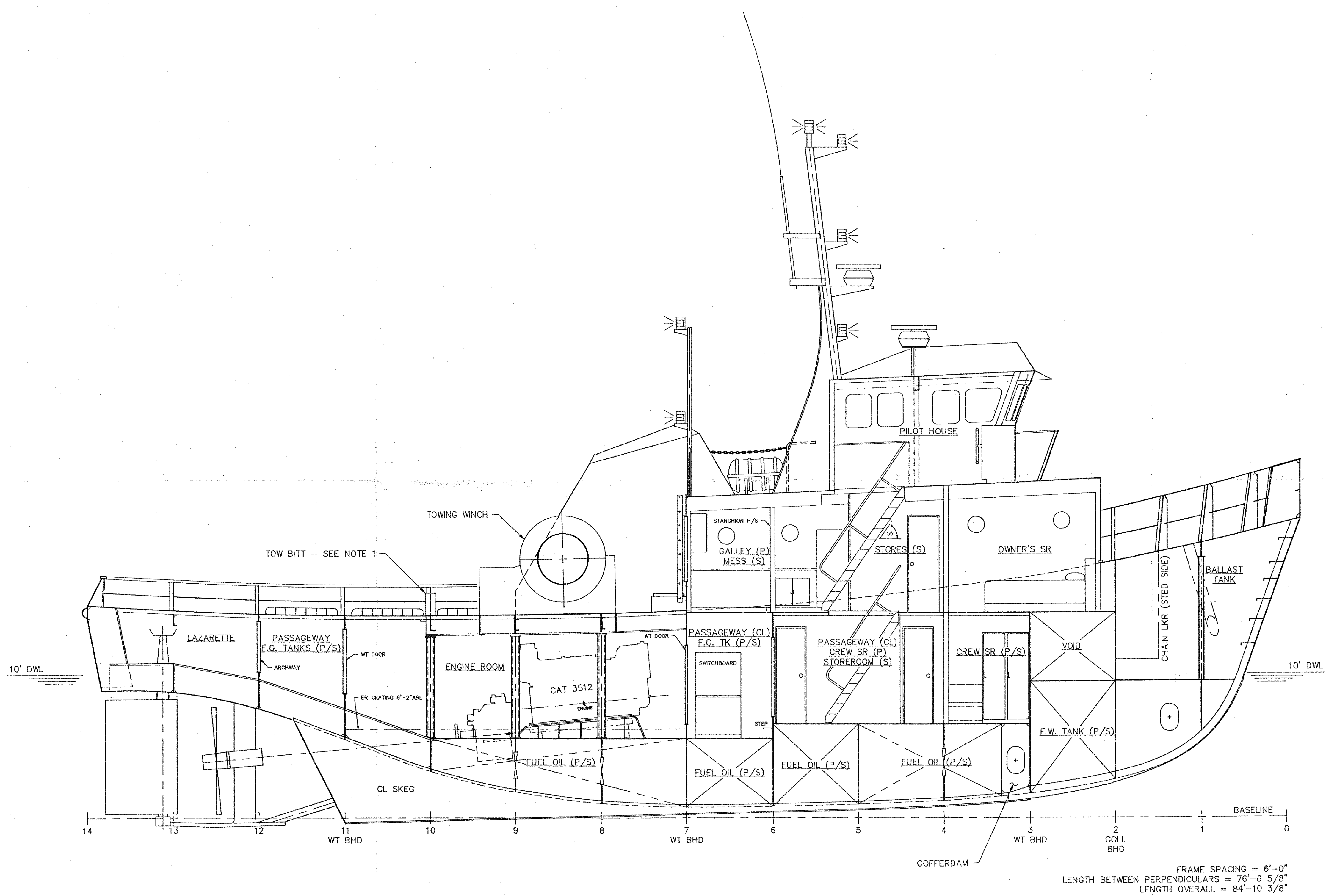


8 7 6 5 4 3 2 1

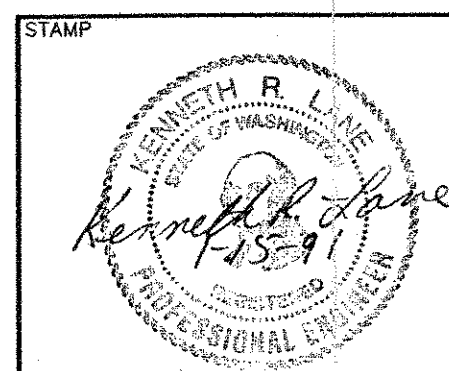
REVISIONS			
REV.	ZONE	DESCRIPTION	DATE APPROVED
A		1. GENERAL UPDATE	12-6



FRAME SPACING = 6'-0"
 LENGTH BETWEEN PERPENDICULARS = 76'-6 5/8"
 LENGTH OVERALL = 84'-10 3/8"

GENERAL NOTES	
1.	LOCATIONS OF BITTS, CHOCKS AND CLEATS TO BE DETERMINED BY SHIPYARD.
2.	BOW AND SIDE FENDERING DETAILS BY SHIPYARD.

FILE COPY



ELLIOTT BAY DESIGN GROUP, LTD.
 NAVAL ARCHITECTS Seattle, WA MARINE ENGINEERS

CLIENT **TRI-STAR MARINE, Inc.**
 2629 NW 54th St. Seattle, WA 98107

PROJECT **TRI-STAR TUG**

TITLE **INBOARD PROFILE**

OWN	TWIG/BK	DATE	1/8/91
CHKD		DATE	
APVD		DATE	
ABS		DATE	
FILE NAME		621001A.DWG	

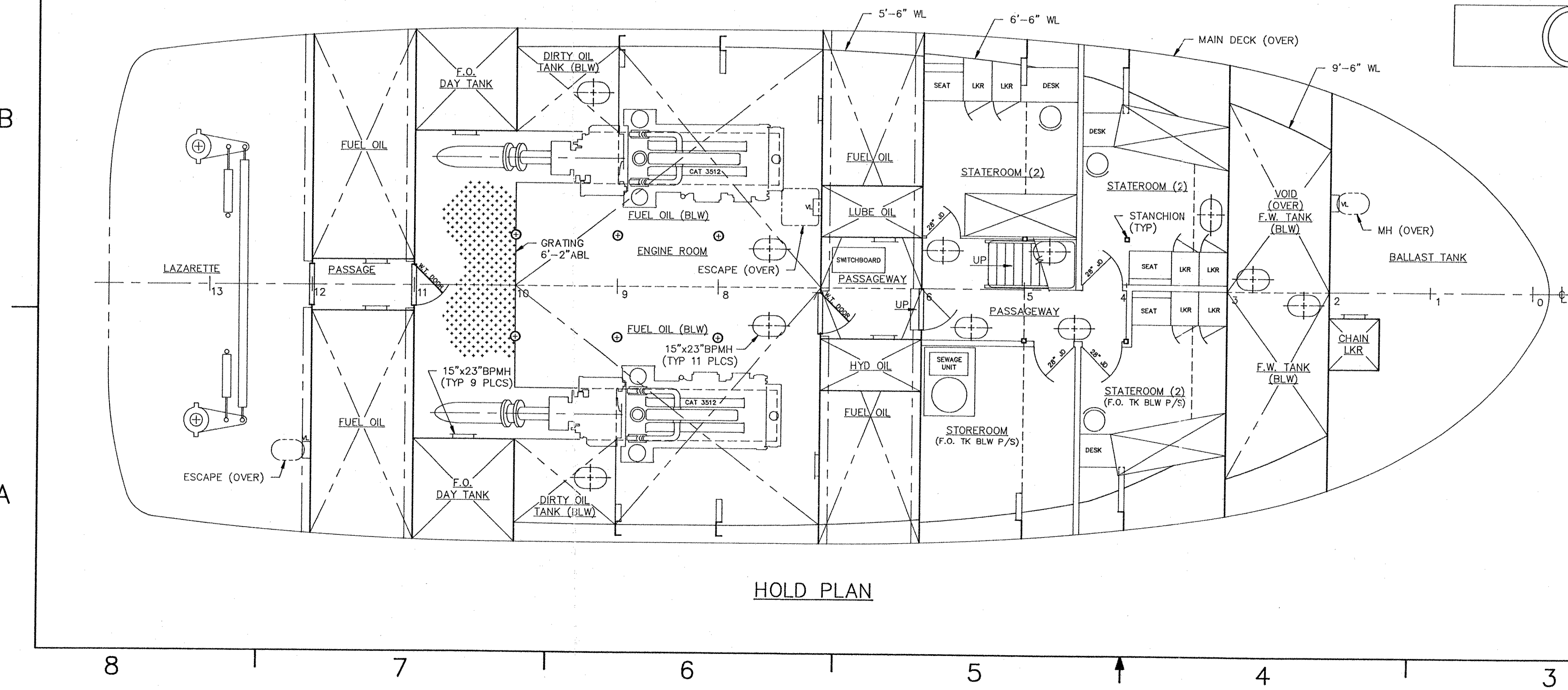
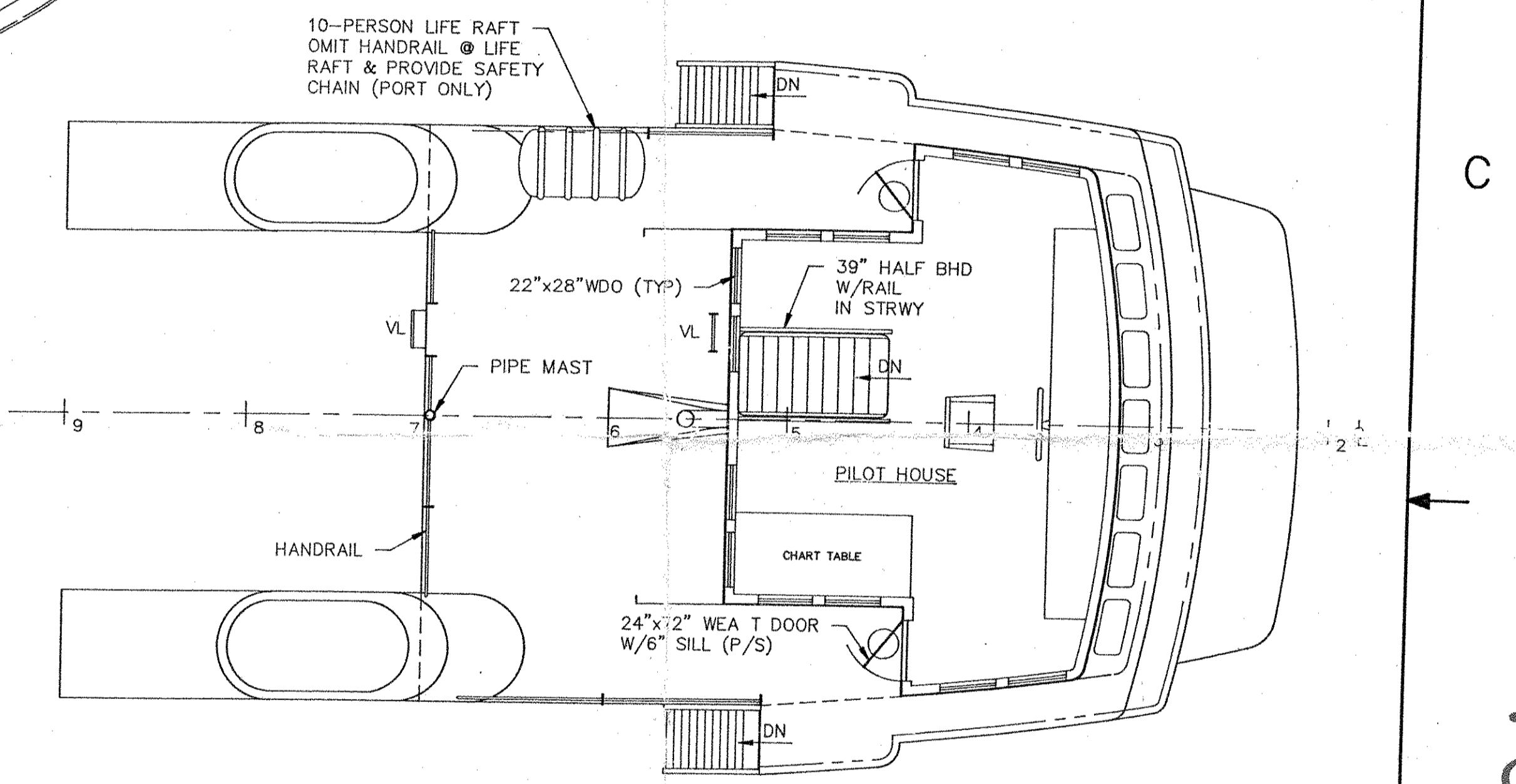
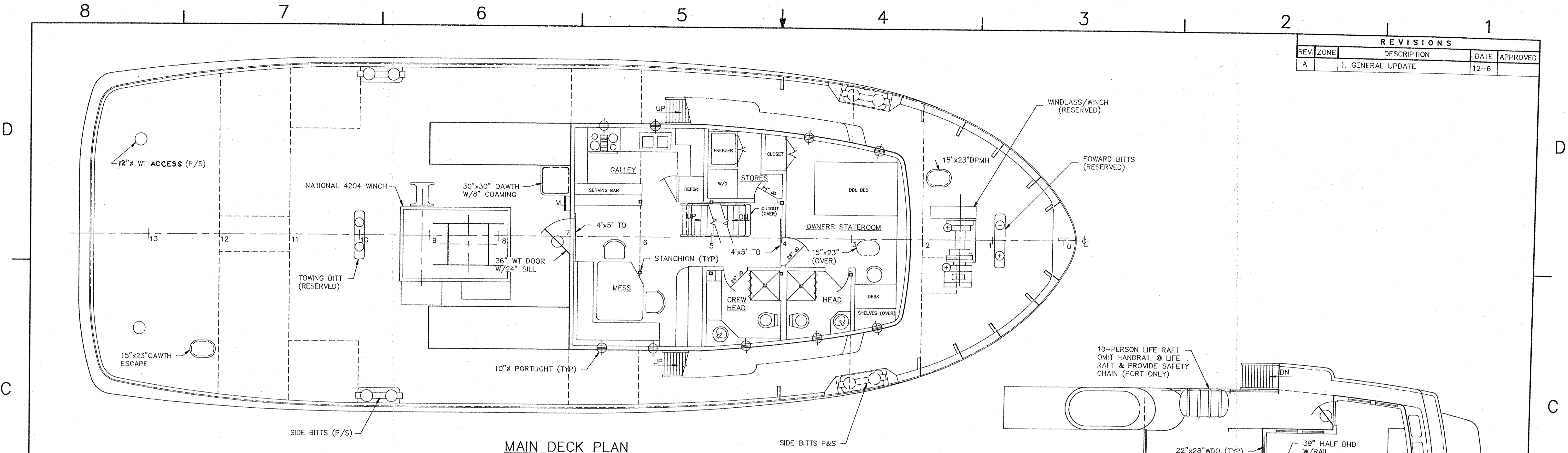
D	FSCM	DWG No.	90062-100-01	REV.	A
SCALE		1/4" = 1'-0"		SHEET: 1 OF 1	

D
C
B
A

90062-100-01

8 7 6 5 4 3 2 1

REVISIONS			
REV. ZONE	DESCRIPTION	DATE	APPROVED
A	1. GENERAL UPDATE	12-6	



FILE COPY

		ELLIOTT BAY DESIGN GROUP, LTD. NAVAL ARCHITECTS MARINE ENGINEERS Seattle, WA	
CLIENT TRI-STAR MARINE, Inc. 2629 NW 54th St. Seattle, WA 98107		PROJECT TRI-STAR TUG	
TITLE GENERAL ARRANGEMENT		DWG No. 90062-100-02	
DWG TWIG/BK	DATE 1/8/91	D FSCM	REV. A
CKD DATE	APVD DATE	DWG No. 90062-100-02	SHEET 1 OF 1
ABS DATE	FILE NAME 621002A.DWG	SCALE 1/4" = 1'-0"	

90062-100-02

1/8" = 1'-0"