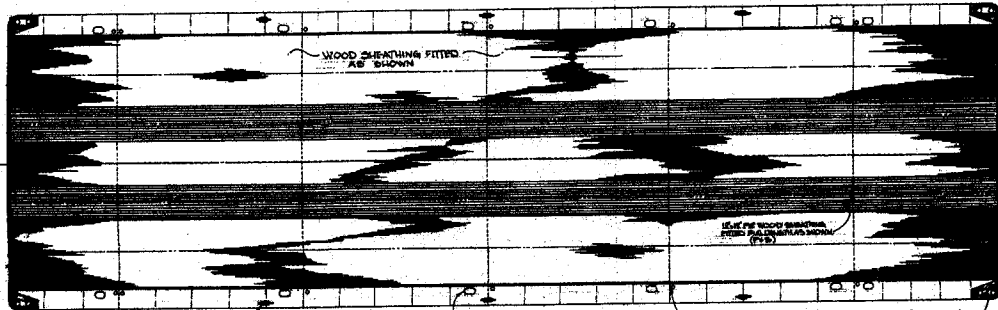
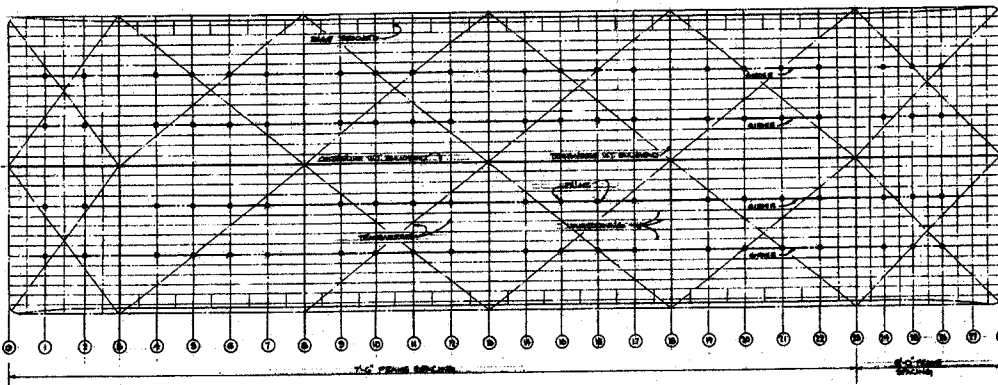


PLAN VIEW



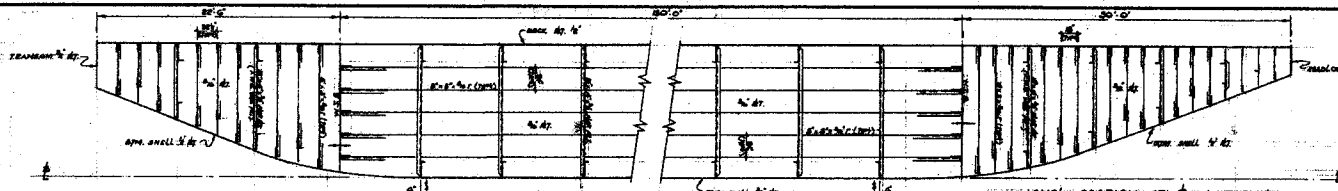
MAIN DECK



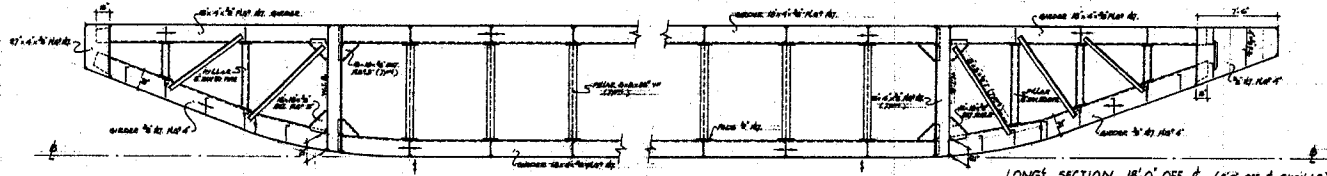
LAYOUT OF DECK BEAMS

PRINCIPAL PARTICULARS
 LENGTH OVERALL 207'-6"
 BREADTH MLD 60'-0"
 DEPTH MLD 17'-0"

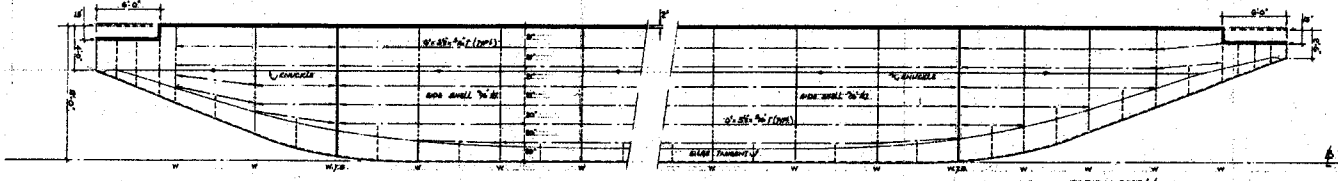
| NO. | DATE | BY | REVISION |
|----------------------------|------|----|----------|
| | | | |
| DECK CARGO LAYOUT | | | |
| GENERAL ARRANGEMENT | | | |
| | | | |
| | | | |
| PETER VON TREDEL LTD | | | |



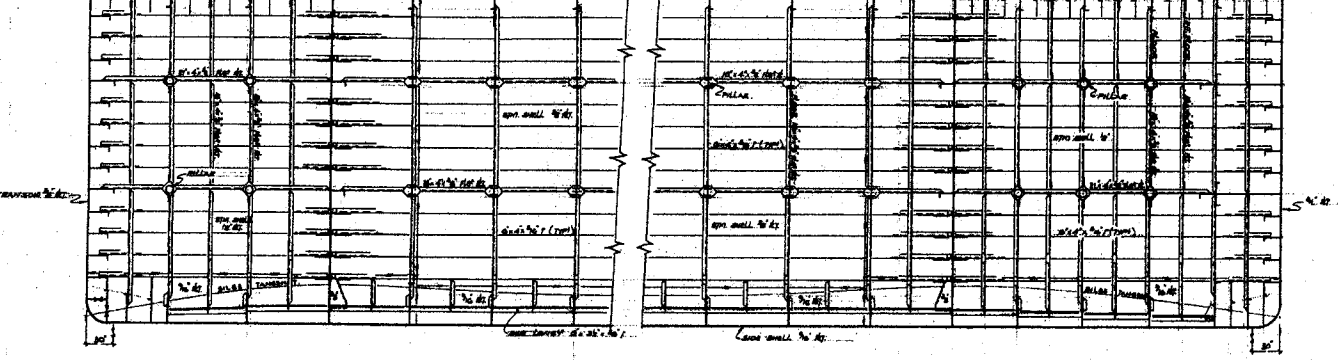
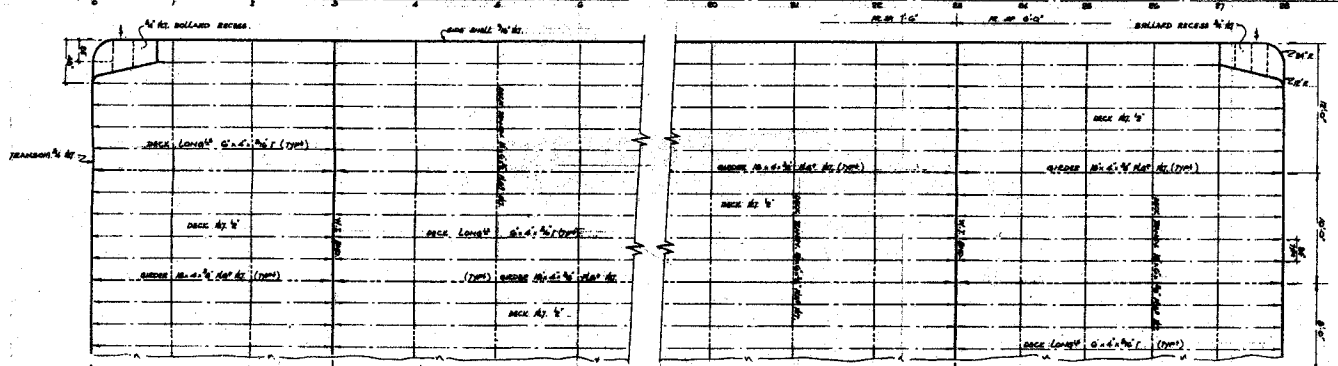
LONGIT. SECTION AT 6' (W.T. BND.)



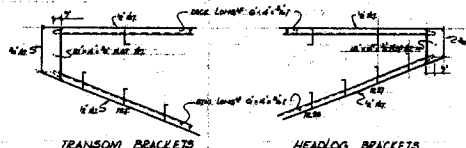
LONGIT. SECTION 18'0" OFF 6' (W.T. BND.)



SIDE SHELL

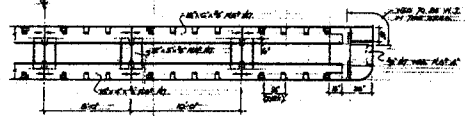


PLAN VIEWS AT DECK AND BOTTOM.

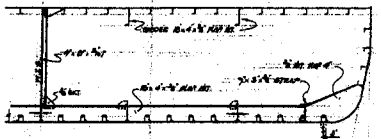


TRANSOM BRACKETS

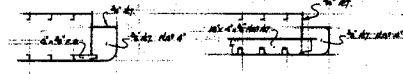
HEADLOG BRACKETS



SECTION AT FB 27



SECTION AT FB 24 1/2



SECTN AT FB 27 1/2

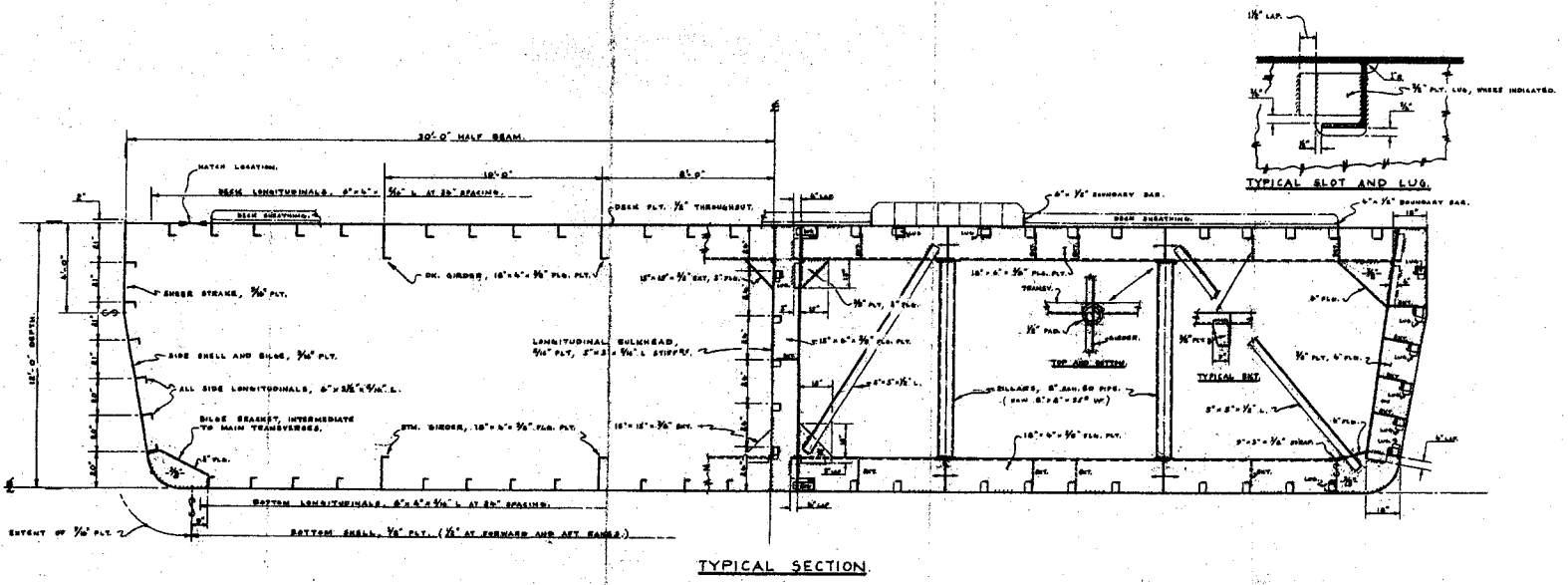
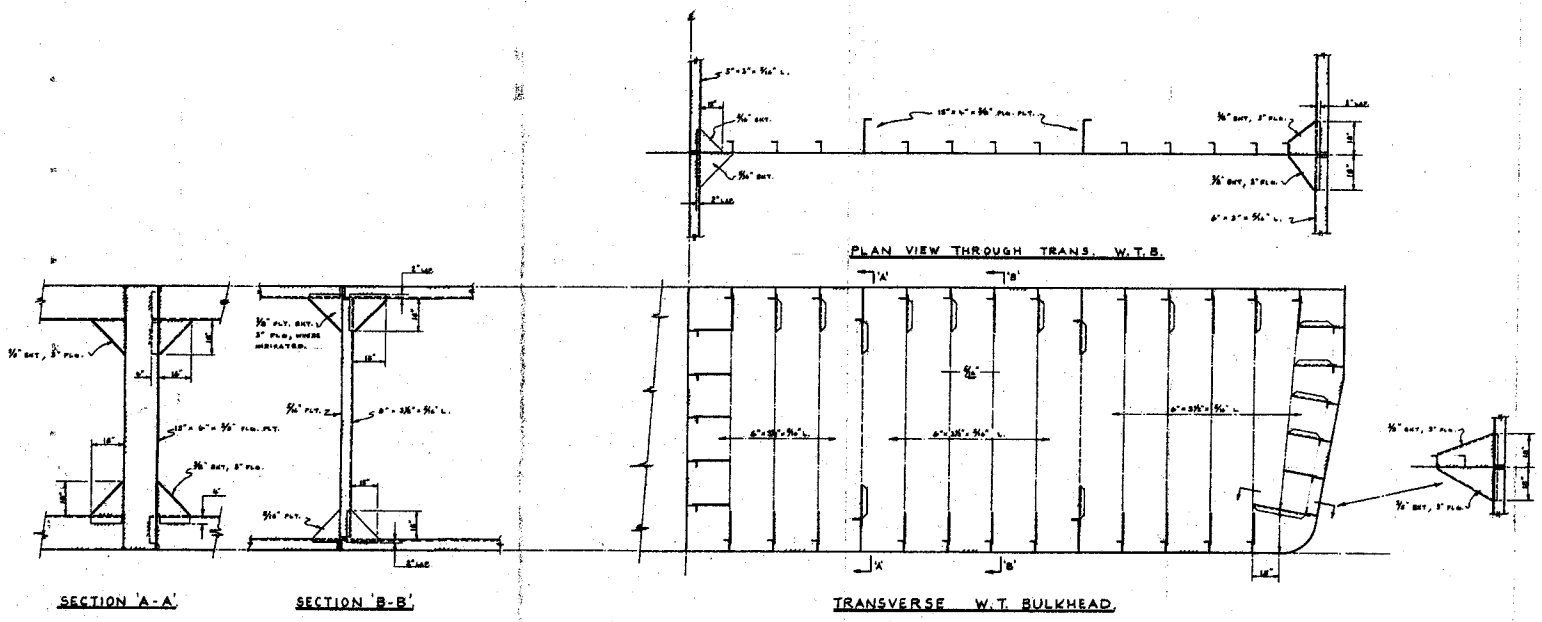
SECTN AT FB 27 3/8

NOTE: dimensions shown above indicate structure as framed. dimensions shown below indicate structure as built.

Deck Plt = 1/2"
Ribs Plt = 3/8"
Frame 25Hx25 spacing = 6'
Frame D 25Hx25 spacing = 7'6"
Deck Lays = 6/4 x 5/16 L
Deck Trns = 10 x 6 x 3/8 FP
DIMENSIONS =

| REVISION | | DATE |
|---------------------------|--------------------|---------|
| NO. | DESCRIPTION | |
| | | |
| PROJECT: DECK CARGO BARGE | | |
| OWNER: SAICO 10 | | |
| TITLE: STRUCTURAL ARRGT | | |
| SCALE: AS SHOWN | DRAWING NO.: 226-R | DATE: D |

PETER'S HATFIELD LTD.



| GENERAL REVISIONS | | | | NO. |
|-------------------------|------|-------------|----|-------|
| NO. | DATE | REVISION | BY | CHKD. |
| | | | | |
| DECK CARGO BARGE | | | | |
| STRUCTURAL SECTIONS | | | | |
| NO. 0. PARAGRAPHS | | DRAWING NO. | | NO. |
| NO. 1. 1/2" x 1/2" PLY. | | 226-3 | | A |
| NO. 2. 1/4" x 1/2" PLY. | | 16" PER 12" | | |
| PETERS HATFIELD LTD | | | | |