



SURVEY FOR LOAD LINES

Report No.: YY176292-827657-001

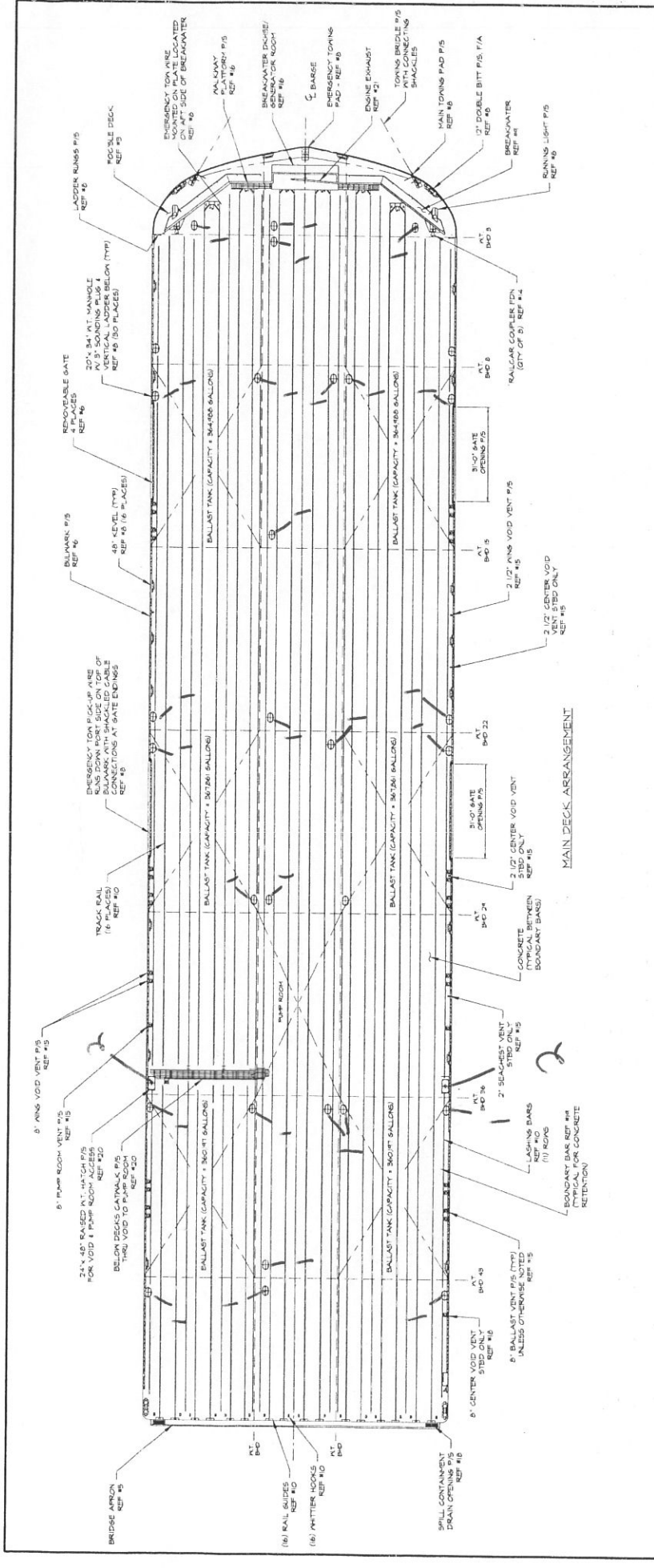
Date: 27 April 2007

INTERNATIONAL CONVENTION ON LOAD LINES, 1966 (IMO STANDARD FORM)

RECORD OF CONDITIONS OF ASSIGNMENT

| | |
|--------------------------------------|--|
| Name of Ship | GUNDERSON MARINE HULL 74 (Nana Provider) |
| Port of Registry | |
| Nationality | United States of America |
| Distinctive Number or Letter | 1197833 |
| Shipbuilders | GUNDERSON MARINE, INC. |
| Yard Number | 74 |
| Date of Construction / Conversion | 2006/2007 |
| Freeboard assigned as a ship of Type | |
| Classification | •A1, Barge |
| Date and place of initial survey | 27 April 2007 |





OWNER: GGG
 ABB
 JEGG

DESIGNER: GUNDESON MARINE
 DRAWN BY: JJP
 CHECKED BY: JJP

DATE: 08/10/08
 REVISION: B

PROJECT: 74-03
 DRAWING NO: 74-03
 SHEET: 2 OF 3

SCALE: UNLESS OTHERWISE NOTED: 1/16" = 1'-0"

GUNDESON MARINE
 A GREENSBRIER COMPANY

GENERAL ARRANGEMENT

420'-0" x 100'-0" x 24'-0" RAILCAR/DECK CARGO BARGE

APPROVALS

ALL INFORMATION CONTAINED IN OR DISCLOSED BY THIS DOCUMENT IS CONSIDERED CONFIDENTIAL AND PROPRIETARY BY GUNDESON MARINE. ANY REUSE OR REPRODUCTION OF THIS INFORMATION WITHOUT THE WRITTEN CONSENT OF GUNDESON MARINE IS PROHIBITED. ALL SALES RIGHTS ARE EXPRESSLY RESERVED BY GUNDESON MARINE. ANY COMMUNICATION OF THIS INFORMATION TO OTHERS IS PROHIBITED WITHOUT PRIOR WRITTEN CONSENT OF GUNDESON MARINE, LLC.

HALF SIZE PRINT

DOORWAYS IN SUPERSTRUCTURES, EXPOSED MACHINERY CASINGS AND DECKHOUSE PROTECTING OPENINGS IN FREEBOARD AND SUPERSTRUCTURE DECKS (Regs. 12, 17 & 18)

| Location | Ref. No. on Sketch or Plan Page 2 | Number and Size of Openings | Height of Sills | Closing Appliances | |
|--|-----------------------------------|-----------------------------|-----------------|--------------------|----------------|
| | | | | Type and Material | Number of Dogs |
| Companionway for bosun store in Position 1 leading below the freeboard deck. | | | | | |
| In bridge forward bulkhead. | | | | | |
| In bridge after bulkhead | | | | | |
| In raised quarter deck bulkhead. | | | | | |
| In poop bulkhead | | | | | |
| In exposed machinery casings on freeboard deck | | | | | |

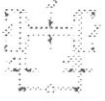
DOORWAYS IN SUPERSTRUCTURES, EXPOSED MACHINERY CASINGS AND DECKHOUSE PROTECTING OPENINGS IN FREEBOARD AND SUPERSTRUCTURE DECKS (continued)

| Location | Ref. No. on Sketch or Plan Page 2 | Number and Size of Openings | Height of Sills | Closing Appliances | |
|--|-----------------------------------|-----------------------------|-----------------|--------------------|----------------|
| | | | | Type and Material | Number of Dogs |
| In exposed machinery casings on superstructure deck | | | | | |
| In machinery casings within superstructures or deckhouse on freeboard deck | | | | | |
| In deckhouse in Position 1 enclosing openings leading below freeboard deck | | | | | |
| In deckhouses in Position 2 enclosing openings leading within enclosed superstructures or below freeboard deck | | | | | |
| In exposed pump room casings | | | | | |
| | | | | | |
| | | | | | |

**DOORWAYS IN SUPERSTRUCTURES, EXPOSED MACHINERY CASINGS AND DECKHOUSE
PROTECTING OPENINGS IN FREEBOARD AND SUPERSTRUCTURE DECKS (continued)**

| Location | Ref. No. on Sketch or Plan Page 2 | Number and Size of Openings | Height of Sills | Closing Appliances | |
|----------|-----------------------------------|-----------------------------|-----------------|--------------------|----------------|
| | | | | Type and Material | Number of Dogs |
| | | | | | |
| | | | | | |
| | | | | | |
| | | | | | |
| | | | | | |
| | | | | | |
| | | | | | |
| | | | | | |

HATCHWAYS AT POSITION 1 AND 2 CLOSED BY PORTABLE COVERS AND SECURED WEATHERTIGHT BY TARPAULINS AND BATTENING DEVICES (Reg. 15)

| | | | | | | | | | |
|--|------------------|--|--|--|--|--|--|--|--|
| Position and Reference No. on Sketch or Plan --- Page 2 | | | | | | | | | |
| Dimensions of clear opening at top of coaming | | | | | | | | | |
| Height of coamings above deck | | | | | | | | | |
| PORTABLE BEAMS  | Number | | | | | | | | |
| | Spacing | | | | | | | | |
| | b1 x tf | | | | | | | | |
| | D x tw | | | | | | | | |
| | b2 x tf | | | | | | | | |
| Bearing Surface | | | | | | | | | |
| Means of securing each beam | | | | | | | | | |
| PORTABLE COVERS | Material | | | | | | | | |
| | Thickness | | | | | | | | |
| | Direction fitted | | | | | | | | |
| | Bearing Surface | | | | | | | | |
| Spacing of Cleats | | | | | | | | | |
| | | | | | | | | | |
| TARPAULINS | No. of layers | | | | | | | | |
| | Material | | | | | | | | |

Means of securing each section of covers:
 Are wood covers fitted with galvanized end bands?
 Position 1 --- Upon exposed freeboard and raised quarter decks, and upon exposed superstructure decks situated forward of a point located a quarter of the ship's length from the forward perpendicular.
 Position 2 --- Upon exposed superstructure decks situated abaft a quarter of the ship's length from the forward perpendicular.

Note: Some authorities require that galvanized steel bands protecting the ends of wood hatch boards be efficiently secured. Indicate if fitted.

HATCHWAYS AT POSITION 1 AND 2 CLOSED BY WEATHERTIGHT COVERS OF STEEL (OR OTHER EQUIVALENT MATERIAL) FITTED WITH GASKETS AND CLAMPING DEVICES (Reg. 16)

| | | | | | | |
|---|--|--|--|--|--|--|
| Position and Reference No. on Sketch or Plan--2 | | | | | | |
| Dimensions of clear opening at top of coaming | | | | | | |
| Height of coaming above deck | | | | | | |
| Type of cover or Patent Name | | | | | | |
| Position and Reference No. on Sketch or Plan--2 | | | | | | |
| Dimensions of clear opening at top of coaming | | | | | | |
| Height of coaming above deck | | | | | | |
| Type of cover or Patent Name Material | | | | | | |

MACHINERY SPACE OPENINGS AND MISCELLANEOUS OPENINGS IN FREEBOARD AND SUPERSTRUCTURE DECKS (Regs. 17 & 18)

| | | | | | | |
|---|--------------|------------------|-------------------|--|--|--|
| Position and Reference No. on Sketch or Plan--2 | 1 | 2 | | | | |
| Dimensions | 20" X 34" | 24" X 48" | | | | |
| Height of coaming | Flush | 4" | | | | |
| COVER | Material | Steel | Aluminum | | | |
| | How attached | Bolted | Hinged and Dogged | | | |
| Number and spacing of Dogs | 34 Bolts | 6 Equally Spaced | | | | |
| Position and Reference No. on Sketch or Plan--2 | | | | | | |
| Dimensions | | | | | | |
| Height of coaming | | | | | | |
| COVER | Material | | | | | |
| | How attached | | | | | |
| Number and spacing of Dogs | | | | | | |

MACHINERY SPACE OPENINGS AND MISCELLANEOUS OPENINGS IN FREEBOARD AND SUPERSTRUCTURE DECKS (Regs. 17 & 18) (continued)

| | | | | | | | | |
|---|--------------|--|--|--|--|--|--|--|
| Position and Reference No. on Sketch or Plan--2 | | | | | | | | |
| Dimensions | | | | | | | | |
| Height of coaming | | | | | | | | |
| COVER | Material | | | | | | | |
| | How attached | | | | | | | |
| Number and spacing of Dogs | | | | | | | | |
| Position and Reference No. on Sketch or Plan--2 | | | | | | | | |
| Dimensions | | | | | | | | |
| Height of coaming | | | | | | | | |
| COVER | Material | | | | | | | |
| | How attached | | | | | | | |
| Number and spacing of Dogs | | | | | | | | |
| Position and Reference No. on Sketch or Plan--2 | | | | | | | | |
| Dimensions | | | | | | | | |
| Height of coaming | | | | | | | | |
| COVER | Material | | | | | | | |
| | How attached | | | | | | | |
| Number and spacing of Dogs | | | | | | | | |

Note:

VENTILATORS ON FREEBOARD AND SUPERSTRUCTURE DECKS (POSITION 1 AND 2) (Reg. 19)

| Deck on which fitted | Number Fitted | Coaming | | Closing Appliance | Remarks |
|----------------------|---------------|------------|--------|-------------------|---------|
| | | Dimensions | Height | | |
| | | | | | |

(1) In vessels less than 100 meters (328 ft.)

Closing Appliances: Are to have covers permanently attached. Indicate means of attachment, such as chained, hinged, etc., in Remarks column.

(2) Coamings of ventilators which exceed 900 m/m (35½ ") in height are to be specifically supported. Indicate means of support in Remarks column.

AIR PIPES OF FREEBOARD AND SUPERSTRUCTURE DECKS (Reg. 20)

| Deck on which fitted | Number Fitted | Coaming | | Describe Closing Appliance |
|----------------------|---------------|------------|--------|-----------------------------|
| | | Dimensions | Height | |
| Freeboard | 31 | 8" | 32.25" | Automatic Non-return Device |
| Freeboard | 1 | 2" | 32" | " |
| Freeboard | 4 | 2 1/2" | 32.5" | " |

CARGO PORT AND OTHER SIMILAR OPENINGS (Reg. 21)

| Position of port | Dimensions of opening | Distance of lower edge from freeboard deck | Securing devices | Remarks |
|------------------|-----------------------|--|------------------|---------|
| | | | | |

SCUPPERS, INLETS AND DISCHARGES (Reg. 22)

| State if Scupper or Discharge | Number | Pipe | | | From | Vertical distance above top of keel | | | Number, Type and Material of Discharge Valves | Position of Controls State whether Accessible or Operable From Freeboard Deck |
|-------------------------------|--------|----------|-----------|----------|----------------------|-------------------------------------|----------------|-------------|---|---|
| | | Diameter | Thickness | Material | | Discharge | Outlet in hull | Inboard end | | |
| I | 1 | 14" | .593" | Steel | Sea Suction | | | 18" | 14" Butterfly Stainless Steel | Accessible |
| D | 1 | 14" | .593" | Steel | Ballast Discharge | 30" | | | " | " |
| S | 2 | 8" | | | Bridge Lock Scuppers | 56.25" below Main Deck | | | | " |

S --- Scupper
D --- Discharge
I --- Inlet

MS --- Mild Steel
CS --- Cast steel
GM --- Gun metal Any other approved material to be designated non-return

SD --- Screw down
ANR --- Automatic non-return
SD ANR --- Screw down automatic

NOTE: Symbols may be used at the discretion of the Surveyor.

SIDE SCUTTLES (Reg. 23)

| Location of side scuttle (airports to spaces below freeboard deck to spaces within enclosed super-structures, or to deck houses protecting access to spaces below freeboard deck.) | Number fitted | Clear glass size | Fixed or opening | Material | | Type of Glass and Thickness | Standards used and Type No. |
|--|---------------|------------------|------------------|----------|-----------|-----------------------------|-----------------------------|
| | | | | Frame | Deadlight | | |
| | | | | | | | |

No side scuttle shall be fitted in a position so that its sill is below a line drawn parallel to the freeboard deck at side and having its lowest point 2.5 percent of the breadth (B) above the load waterline, or 500 millimeters (19½ inches) whichever is greater distance. Indicate all side scuttles not complying with this requirement.
 NOTE: All side scuttles fitted with efficient hinged inside deadlights are to be arranged so that they can be effectively closed and secured watertight.

FREEING PORTS (Reg. 24)

| | Length of Bulwark | Height of Bulwark | Number and Size of Freeing Ports each side | Total Area each side | Required Area each side |
|---------------------------|-------------------|-------------------|--|----------------------|-------------------------|
| Freeboard Deck After Well | | | | | |
| Forward Well | | | | | |
| Superstructure Deck | | | | | |

State fore and aft position of each freeing port in relation to superstructure end bulkheads

Particulars of shutters, bars or rails fitted to freeing ports:

Height of lower edge of freeing port above deck:

PROTECTION OF THE CREW (Regs. 25 & 26)

State particulars of bulwarks or guardrails on freeboard and superstructure decks:

State details of lifelines, walkways, gangways or underdeck passageways where required to be fitted:

Where is crew berthed? Indicate if unmanned.

TIMBER DECK CARGO FITTINGS (Regs. 44)

State particulars of upright, sockets, lashings, guardrails and lifelines:

OTHER SPECIAL FEATURES

SKETCH GUNWALE CONNECTION

For Rounded Gunwale Indicate Relationship to Deckline Marked on Vessel to Deckline as Defined in Regulation 4.

The conditions of assignment shown on this form are a record of the arrangements and fittings provided on the ship and are in accordance with the requirements of the relevant regulations of the International Convention of Loadlines, 1966.

White, William R., Portland, Port
 Surveyor

27 April 2007
 Date