



September 1, 2021

New Barge Sailing Schedules

New barge sailing schedules for Central and Southeast Alaska are available and posted online. The schedules cover October 2021 – March 2022. All current sailing schedules are available to download on our website: www.lynden.com/aml/barge-schedule.html

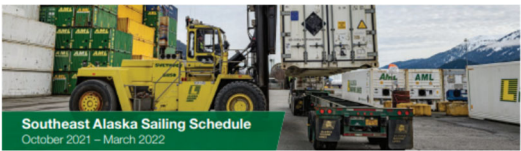
If you have any questions please contact your sales representative or our customer service department and we would be happy to help. Thank you for your continued support!



Central Alaska Sailing Schedule
October 2021 – March 2022

Month	Day	Vessel
October	3	C1416
October	10	C1426
October	17	C1434
October	24	C1444
November	7	C1504
November	14	C1514
November	21	C1524
November	28	C1534
December	5	C1504
December	12	C1514
December	19	C1524
December	26	C1534
January	2	C2024
January	9	C2034
January	16	C2044
January	23	C2054
February	6	C2134
February	13	C2144

Central Alaska



Southeast Alaska Sailing Schedule
October 2021 – March 2022

Month	Day	Vessel
October	3	S1402
October	10	S1411
October	17	S1421
October	24	S1431
October	31	S1441
November	7	S1451
November	14	S1461
November	21	S1471
November	28	S1481
December	5	S1491
December	12	S1501
December	19	S1511
December	26	S1521
January	2	S2021
January	9	S2031
January	16	S2041
January	23	S2051

Southeast Alaska

Vessel Departure and Arrival Schedules

Day	Departure From Seattle To	Estimated Time to Travel	Day	Arrival From Seattle To	Estimated Time to Travel
Tuesday	Anchorage	8 days	Friday	Anchorage	8 days
Tuesday	Corona	8 days	Friday	Fairbanks	10 days
Tuesday	Fairbanks	10 days	Friday	Nome	10 days
Tuesday	Nome	10 days	Friday	Whittier	8 days
Tuesday	Whittier	8 days	Friday	Whittier	8 days

Cargo Cutoff Times

Day	Arrival Cutoff	Full Container (BCU)	Less than container (LCL)	Breakbulk
Tuesday	Change	Thursday 2 PM	Monday 2 PM	Monday 2 PM
Friday	Change	Thursday 2 PM	Monday 2 PM	Monday 2 PM

Customer Service Hotlines

Anchorage (907) 339-5150	Seattle (800) 326-8346
--------------------------	------------------------

Deliver Cargo To: Terminal 115, 6700 W Marginal Way SW, Seattle, WA 98106

Hours & Directions: (800) 950-4265, www.shipaml.com

Vessel Departure and Arrival Schedules

Day	Departure From Seattle To	Estimated Time to Travel	Day	Arrival From Seattle To	Estimated Time to Travel
Wednesday	Anchorage	8 days	Friday	Anchorage	8 days
Wednesday	Corona	8 days	Friday	Fairbanks	10 days
Wednesday	Fairbanks	10 days	Friday	Nome	10 days
Wednesday	Nome	10 days	Friday	Whittier	8 days
Wednesday	Whittier	8 days	Friday	Whittier	8 days

Cargo Cutoff Times

Day	Arrival Cutoff	Full Container (BCU)	Less than container (LCL)	Breakbulk
Wednesday	Change	Thursday 2 PM	Monday 2 PM	Monday 2 PM
Friday	Change	Thursday 2 PM	Monday 2 PM	Monday 2 PM

Customer Service Hotlines

Juneau (800) 585-6102	Seattle (800) 326-8346
-----------------------	------------------------

Deliver Cargo To: Service Center (Full Load/Unload), 5600 W Marginal Way SW, Seattle, WA 98106

Hours & Directions: Warehouse (LCL), 5615 W Marginal Way SW, Seattle, WA 98106, (800) 950-4265, www.shipaml.com

Our mailing address is:
AML
5615 W Marginal Way SW
Seattle, WA 98106-1521