

American Bureau of Shipping SURVEY FOR LOAD LINES

Report No. PO 6208

Date: 27 May 1981



INTERNATIONAL CONVENTION ON LOAD LINES, 1966 (IMCO STANDARD FORM)

RECORD OF CONDITIONS OF ASSIGNMENT

BARANOF PROVIDER

Name of Ship "SATCO 10"

8125975

Port of Registry *Portland*

Nationality U.S.A.

Distinctive Number or Letters

Shipbuilders FMC Corp. Marine & Rail Equip Div.

Yard Number Hull 20

Date of Build (~~Construction~~) June 1981

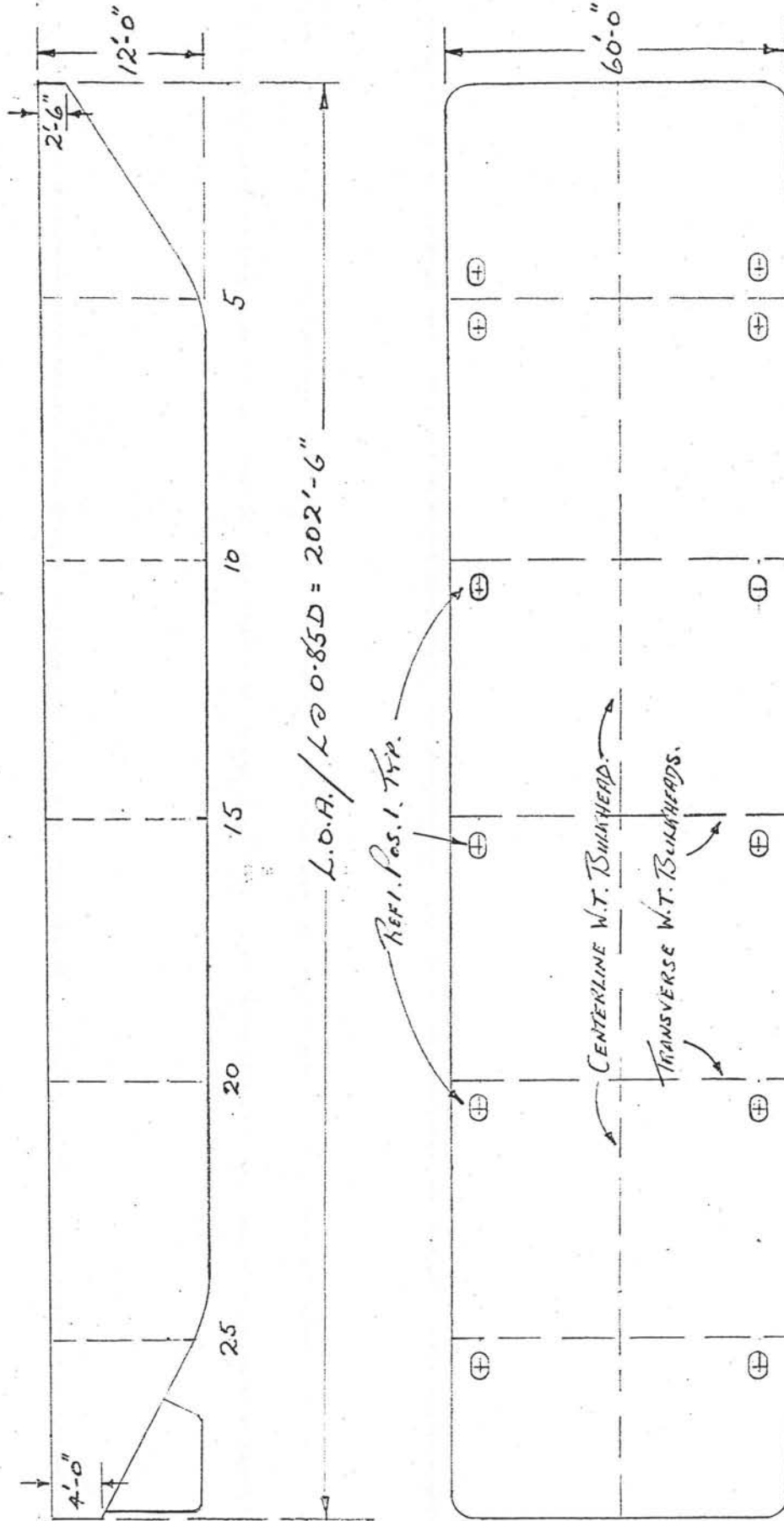
Freeboard assigned as a ship of Type "B"

Classification Not Classed

Date and place of initial survey 27 May 1981 Portland, Oregon

A plan of suitable size may be attached to this Report in preference to sketches on this page.

Disposition and dimensions of superstructures, trunks, deckhouses, machinery casings; extent of bulkheads, guard rails and wood sheathing on exposed deck, to be inserted in the diagrams and tables following; together with positions of hatchways, gangways, and other means for the protection of the crew; cargo ports, bow and stern doors, side scuttles, scuppers, ventilators, air pipes, companionways, and other items that would affect the seaworthiness of the ship.







NOTE: In the case of existing vessels state (1) Current Freeboard (2) Extreme Draft

New Construction

ABS — Report No. PO 6208 Date 27 May 1981

DOORWAYS IN SUPERSTRUCTURES, EXPOSED MACHINERY CASINGS AND DECKHOUSES PROTECTING OPENINGS IN FREEBOARD AND SUPERSTRUCTURE DECKS (Regs. 12, 17 & 18)

Location	Ref. No. on Sketch or Plan Page 2	Number and Size of Openings	Height of Sills	Closing Appliances	
				Type and Material	Number of Dogs
In forecastle bulkhead					
In bridge forward bulkhead					
In bridge after bulkhead		Not Applicable			
In raised quarter deck bulkhead					
In poop bulkhead					
In exposed machinery casings on freeboard deck					

DOORWAYS IN SUPERSTRUCTURES, EXPOSED MACHINERY CASINGS AND DECKHOUSES PROTECTING OPENINGS IN FREEBOARD AND SUPERSTRUCTURE DECKS (continued)

Location	Ref. No. on Sketch or Plan Page 2	Number and Size of Openings	Height of Sills	Closing Appliances	
				Type and Material	Number of Dogs
In exposed machinery casings on superstructure decks					
In machinery casings within superstructures or deckhouses on freeboard deck					
In deckhouses in Position 1 enclosing openings leading below freeboard deck		Not Applicable			
In deckhouses in Position 2 enclosing openings leading within enclosed superstructures or below freeboard deck					
In exposed pump room casings					

ABS—Report No. PO 6208 Date 27 May 1981



HATCHWAYS AT POSITIONS 1 AND 2 CLOSED BY PORTABLE COVERS AND SECURED WEATHERTIGHT BY TARPAULINS AND BATTENING DEVICES (Reg. 15)

Position and Reference No. on Sketch or Plan — Page 2							
Dimensions of clear opening at top of coaming							
Height of coamings above deck							
<p>PORTABLE BEAMS</p>	Number						
	Spacing						
<p>PORTABLE COVERS</p>	$b_1 \times t_1$						
	$D \times t_w$						
<p>TARPAULINS</p>	$b_2 \times t_2$						
	Bearing surface						
Means of securing each beam							Not Applicable
<p>PORTABLE COVERS</p> <p>Material</p> <p>Thickness</p> <p>Direction fitted</p> <p>Bearing surface</p>							
Spacing of Cleats							
<p>TARPAULINS</p> <p>No. of layers</p> <p>Material</p>							

NOTE: Some authorities require that galvanized steel bands protecting the ends of wood hatch boards be efficiently secured. Indicate if fitted.

Means of securing each section of covers:
 Are wood covers fitted with galvanized end bands?
 Position 1 — Upon exposed freeboard and raised quarter decks, and upon exposed superstructure decks situated forward of a point located a quarter of the ship's length from the forward perpendicular.
 Position 2 — Upon exposed superstructure decks situated abaft a quarter of the ship's length from the forward perpendicular.

HATCHWAYS AT POSITIONS 1 AND 2 CLOSED BY WEATHERTIGHT COVERS OF STEEL (OR OTHER EQUIVALENT MATERIAL) FITTED WITH GASKETS AND CLAMPING DEVICES (Reg. 16)

Position and Reference No. on Sketch or Plan — Page 2				
Dimensions of clear opening at top of coaming				
Height of coamings above deck			Not Applicable	
Type of cover or Patent Name				
Material				

MACHINERY SPACE OPENINGS AND MISCELLANEOUS OPENINGS IN FREEBOARD AND SUPERSTRUCTURE DECKS (Regs. 17 & 18)

Position and Reference No. on Sketch or Plan — Page 2	Pos. 1 Ref. 1			
Dimensions	15" x 24"			
Height of coaming	Flush			
COVER { Material How attached	Aluminum-With Steel Deck	Mounting Ring		
	Hinged - Quick Opening			
Number and Spacing of Dogs	4 @ 90°			

Position and Reference No. on Sketch or Plan — Page 2				
Dimensions				
Height of coaming				
COVER { Material How attached				
Number and Spacing of Dogs				

AIR PIPES OF FREEBOARD AND SUPERSTRUCTURE DECKS (Reg. 20)

Deck on which fitted	Number fitted	Coaming		Describe Closing Appliances
		Dimensions	Height	
				Not Applicable

ABS — Report No. PO 6208 Date 27 May 1981

CARGO PORT AND OTHER SIMILAR OPENINGS (Reg. 21)

Position of port	Dimensions of opening	Distance of lower edge from freeboard deck	Securing devices	Remarks
		Not Applicable		

SCUPPERS, INLETS AND DISCHARGES (Reg. 22)

State if Scupper, Inlet, or Discharge	Number	Pipe		From	Vertical distance above top of keel			Number, Type and Material of Discharge Valves	Position of Controls State Whether Accessible or Operable From Freeboard Deck
		Diameter	Thickness		Material	Outlet in hull	Discharge		

Not Applicable

MS — Mild steel
 CS — Cant steel
 GM — Gun metal
 Any other approved material to be designated

S — Scupper
 D — Discharge
 I — Inlet

SD — Screw down
 ANR — Automatic non-return
 SD ANR — Screw down automatic non-return

NOTE: Symbols may be used at the discretion of the Surveyor.

FREING PORTS (Reg. 24)

	Length of Bulwark	Height of Bulwark	Number and Size of Freeing Ports each side	Total Area each side	Required Area each side
Freeboard Deck After Well					
Forward Well					
Superstructure Deck					

State fore and aft position of each freeing port in relation to superstructure end bulkheads

{ After Well
 { Forward Well

Not Applicable

Particulars of shutters, bars or rails fitted to freeing ports:

Height of lower edge of freeing port above deck:

PROTECTION OF THE CREW (Regs. 25 & 26)

State particulars of bulwarks or guardrails on freeboard and superstructure decks:

Not Applicable

State details of lifelines, walkways, gangways or underdeck passageways where required to be fitted:

Where is crew berthed? Indicate if unmanned. **Vessel Unmanned**

TIMBER DECK CARGO FITTINGS (Reg. 44)

State particulars of uprights, sockets, lashings, guardrails and lifelines:

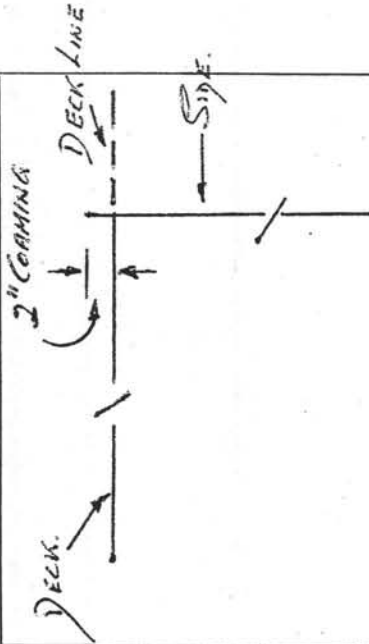
Not Applicable

OTHER SPECIAL FEATURES

None

SKETCH GUNWALE CONNECTION

For Rounded Gunwale Indicate Relationship to Deckline Marked on Vessel to Deckline as Defined in Regulation 4.



The conditions of assignment shown on this form are a record of the arrangements and fittings provided on the ship and are in accordance with the requirements of the relevant regulations of the International Convention on Load Lines, 1966.

B. Stevens

Bernard B. Stevens
(Surveyor's signature)

27 May 1981

(Date)